

The largest and most spectacular AIR-MEET ever given in New England combined with a large AIRCRAFT AND INDUSTRIAL EXPOSITION

Aircraft
Department.

The Aircraft Department
Of The Exposition
Given Under The
Sanction of The
AERONAUTICAL
CHAMBER OF COMMERCE
OF AMERICA

Given by the
LOWELL AIRPORT
CORPORATION

Joseph A. Legare, President
Butler Ames, Treasurer

With the Cooperation of the
LOWELL CHAMBER OF
COMMERCE

And its Aviation Committee

Under the Management of
AMERICAN AIRPORTS
CORPORATION

New York

Represented By

A. R. ROGERS, Manager
Of their Air-Meet and Exposition
Department

COOPERATING
AVIATION ORGANIZATIONS
AND COMMITTEES
National Aviation Association
Boston Chapter

Aviation Committee
Boston Chamber of Commerce

Aero Club of
Massachusetts

The
Aviation Conference Committee
of the New England Council

New England Aero Corps
Reserved Officers Assn.

Aviation Section, Mass.
American Legion

Aviation Committee
Boston & Maine R. R.

OFFICE

AIR-MEET AND EXPOSITION
U. S. Cartridge Co. Building
685 Lawrence Street
Lowell, Massachusetts
Telephone Lowell 9090

THE AVIATION ADVISORY
COMMITTEE OF
NEW ENGLAND'S
MOST PROMINENT MEN
INTERESTED IN AVIATION
IS BEING FORMED BY THE
N. A. A. BOSTON CHAPTER
AND WILL BE ANNOUNCED
LATER

MASSACHUSETTS' GREATEST AIR-MEET and EXPOSITION

To Be Held at the Dedication and Opening of the

LOWELL AIRPORT

ANNOUNCEMENT

This will be the most pretentious undertaking ever put forth in the New England States to bring together the greatest aggregation of well known pilots, commercial and government airplanes, prominent aviation officials and prospective purchasers of airplanes, motors and accessories. The Air-meet will excell in the number of airplanes participating any previous meet ever undertaken in New England.

In connection with this mammoth Air-Meet and on the grounds of the Lowell Airport, will be held a large educational and business-getting exposition, divided into two departments, the Aircraft Industry and General Industry which it is expected will draw to the Air-Meet and Exposition between one and two hundred thousand people.

The Aircraft Department will be educational in character, and it is planned to show goods manufactured by the Aircraft Industry to be used as an advertising medium to secure agencies and orders in the New England States and to acquaint the public with different lines of air-craft manufacture.

The Aircraft Department will be divided into three sections. First—Display of completed aircraft designed for the transportation of passengers, mail or express (Exhibitors may have additional Air-planes on the field for demonstration purposes under the Lowell Airport regulations.)

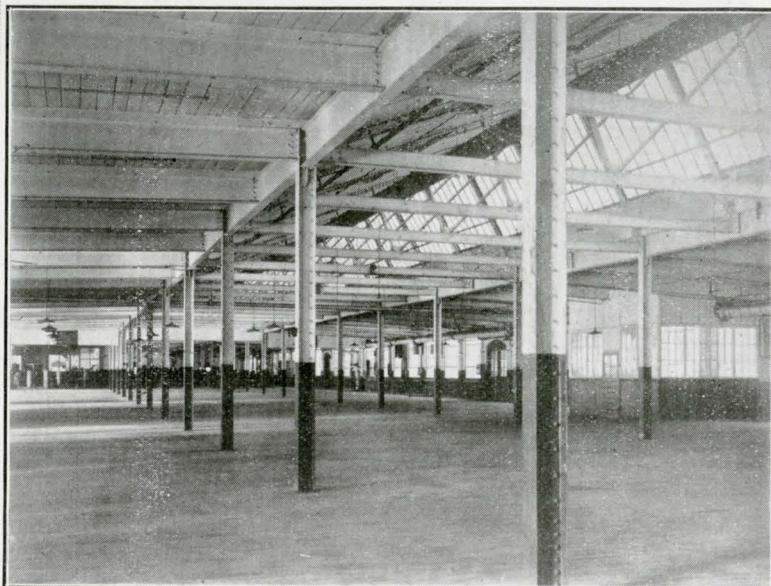
Second—Exhibitions of motors, parts, accessories, navigation and other necessary instruments, lubricating oils and fuels (except that no inflammable material of any kind will be permitted in any exhibit), goggles, clothing, and other goods associated with aviation, and for hangars, lighting, airport equipment and exhibits by flying schools, Government and State organizations and by educational institutions interested in aviation, aviation publications, etc.

Third—This section will be historical in nature and educational in its application. In this exhibit will be installed, so far as is possible, relics of the early days of flying, specimens of early motors and other flying equipment, and airplanes that have made aviation history.

Lowell June 21, 22, 23, 1928 Massachusetts

THE SECRETARY OF THE NAVY HAS AUTHORIZED U. S. AIRSHIP LOS ANGELES TO VISIT LOWELL FOR THE DEDICATION OF THE LOWELL AIRPORT

General Admission 50c, children (under 16) 25c, parking space 50c. Reserved Numbered Seats, including admission \$1.50. Reserved Parking Space, \$1.00. Tickets for both must be purchased at least two days in advance.



THREE-FOURTHS VIEW AIRCRAFTS EXPOSITION
BUILDING, NO. 2—400 FT. X 90 FT.
BUILDINGS BRILLIANTLY LIGHTED AT NIGHT

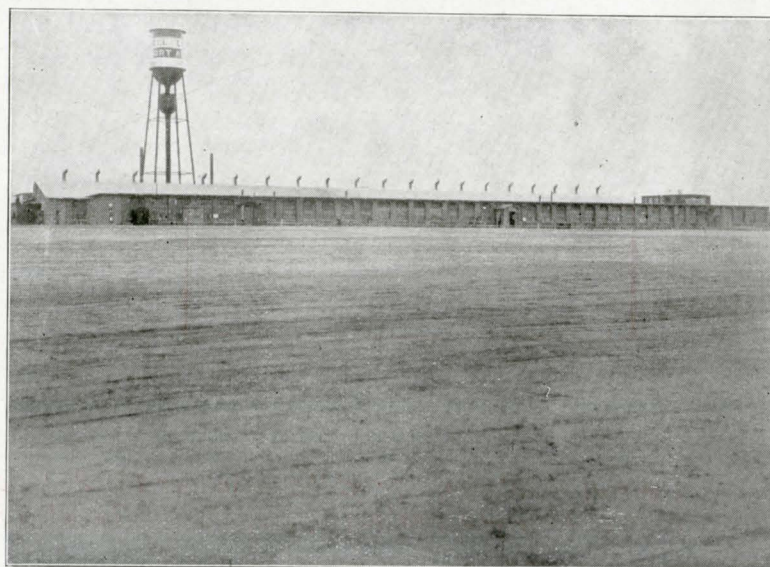
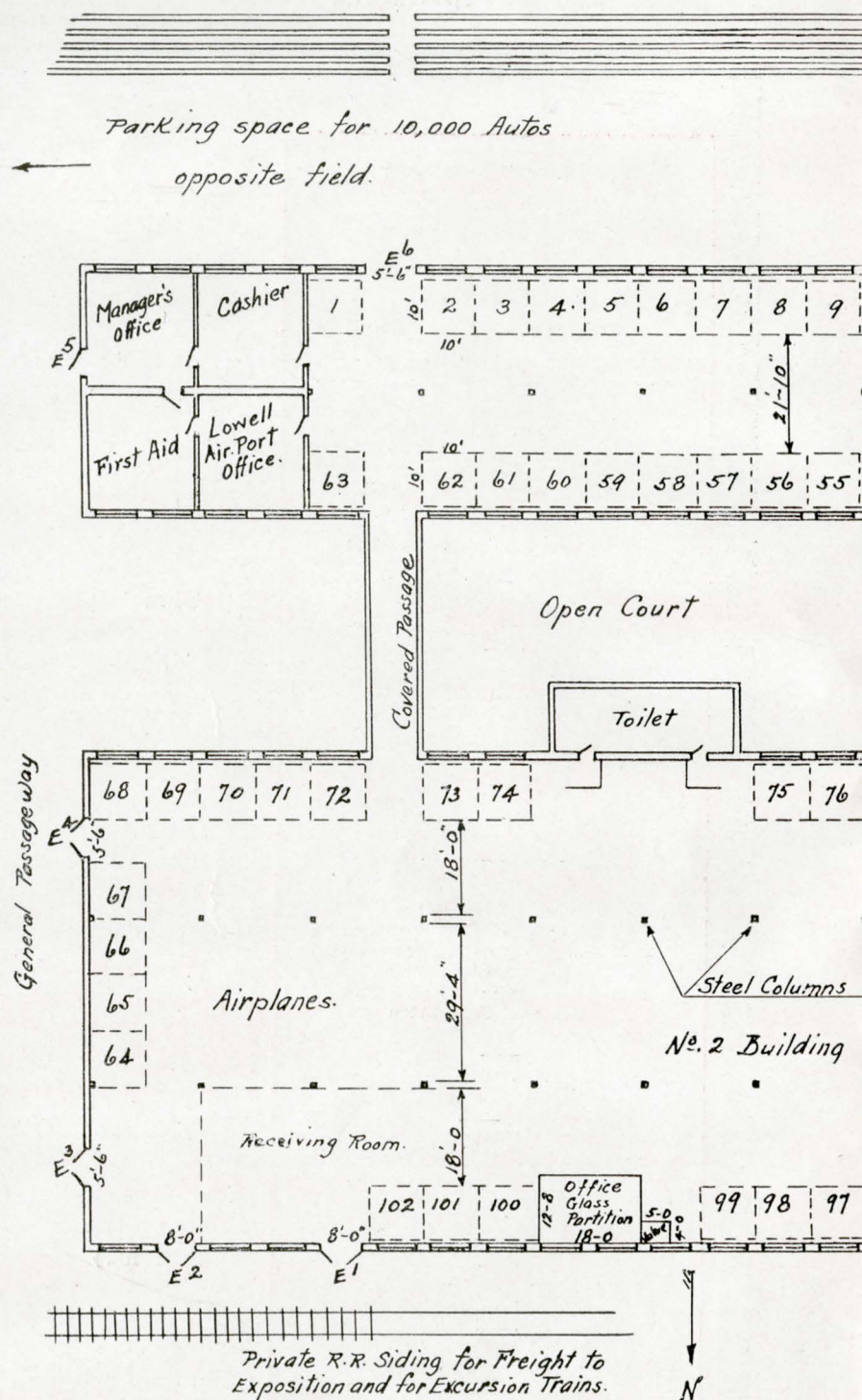


THREE-FOURTHS VIEW GENERAL INDUSTRIAL
EXPOSITION BUILDING NO. 1—400 FT. X 45 FT.
BUILDINGS ARE OF BRICK

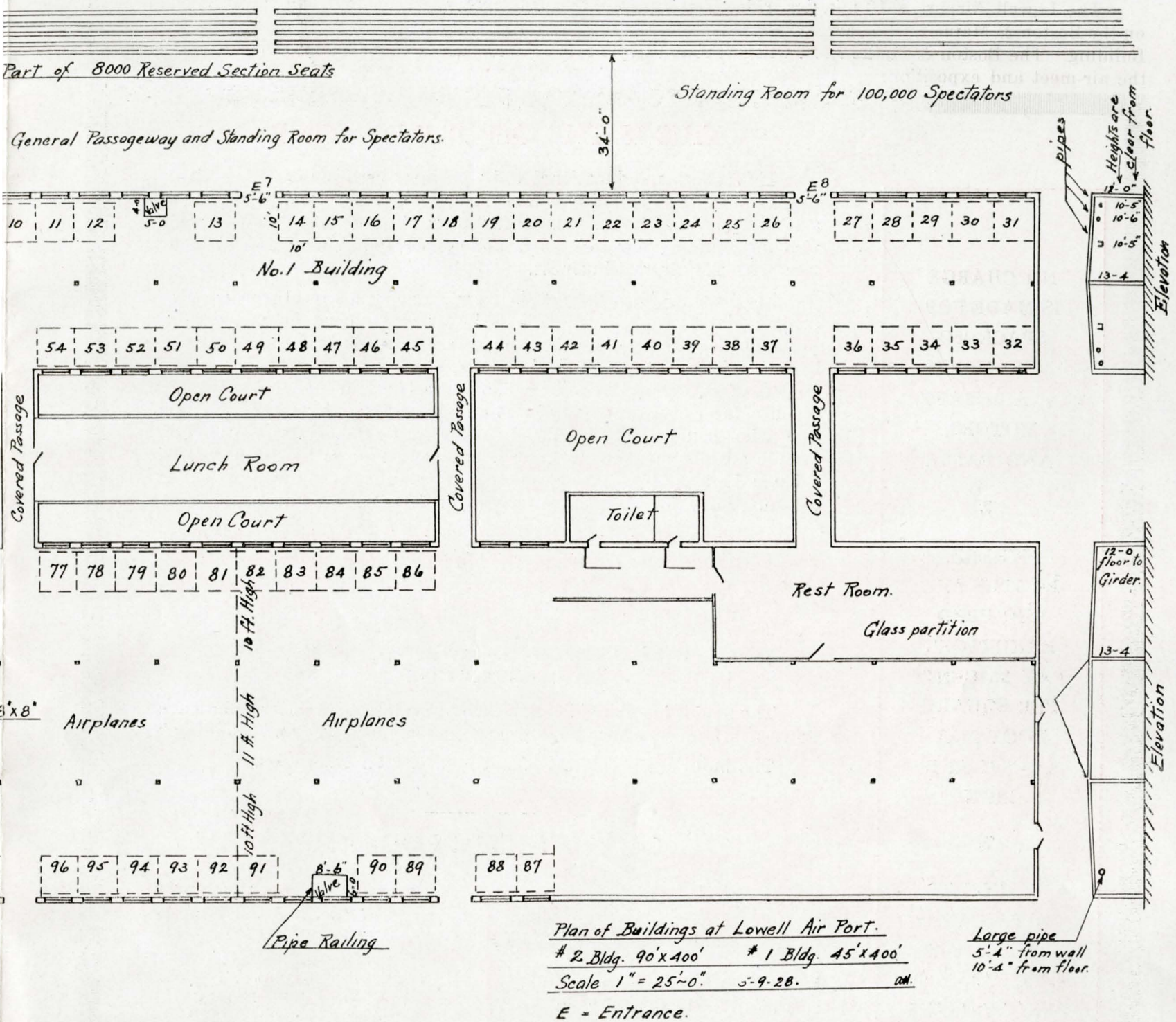
Population of Lowell's trading area over 200,000. Within a radius of 25 miles, which includes Boston, Fitchburg, Nashua, Lawrence and many other large towns is a population of over 1,000,000.

The Boston & Maine Railroad will run excursions over their lines at one fare for the round trip with ticket of admission to the airport attached good for Air Meet and Exposition for which 50 cents extra is charged. Rate from Boston to Lowell Airport and return with ticket of admission \$1.00. Proportionate rates elsewhere.

Space in Building No. 1 for exhibits not connected with aviation, 75c per square foot, including booth and sign.



EXPOSITION BUILDINGS AT THE AIRPORT



THE LOWELL AIRPORT

Fine roads to Lowell from everywhere.

Space in the Exposition is necessarily limited. Therefore, you are urged to secure your space at once.

Every Mayor and Chairman of an Aviation or Air-port Committee and licensed pilot in New England will be sent an invitation to attend.

There will be present the largest gathering of men and women interested in Aviation ever assembled at one place in New England.

Passenger flying at stated hours every day.

The Lowell Airport is 10 minutes' ride by automobile from the center of Lowell. The South Lowell Station on the Boston & Maine R. R. is across the track from the Airport with a spur track running to the Exposition Building. The Boston & Maine R. R. will sell round trip tickets at one fare with a 50-cent ticket of admission to the air-meet and exposition.

THIS IS THE OPPORTUNE TIME

NO CHARGE
IS MADE FOR
SPACE TO
MANUFACTURERS
OF AIRCRAFT,
MOTORS,
AND PARTS

WHERE
BOOTHES ARE
REQUIRED
EXHIBITORS
PAY 35 CENTS
PER SQUARE
FOOT FOR
BOOTH AND
SIGN

CHARGE TO
ALL OTHER
EXHIBITORS
APPLICABLE TO
THE AIRCRAFT
DEPARTMENT
50 CENTS
PER SQ. FT.
INCLUDES
BOOTH AND
SIGN

This is both an educational and a business-getting exposition. New England is a large potential market for both airplanes and parts. This is a most opportune time for manufacturers and agents to exhibit their airplanes, motors, aircraft parts and airport equipment and all that goes with the aircraft business.

Besides the Airports now in New England many others are also being contemplated. Aviation is in the air everywhere, for all are talking about it. Thousands of young men are eager to fly and become licensed pilots. **They will be the pilots, manufacturers, buyers and the dealers of tomorrow.** Aviation is coming faster than the most optimistic manufacturer ever dreamed of. The fear is dying out, people are flying now who could not be induced to step into a plane six months ago. People are commencing to know planes and motors by the names of their makers. At an exposition, visitors come in an inquiring mood to ask questions, to become familiar with different types and makes.

No manufacturer or dealer wants to be left out in this beneficial kind of advertising. Business will be done here, agencies secured, sales made and good will established. The list of cooperating committees bespeaks the importance of Massachusetts' Greatest Air-Meet and Exposition.

\$10,000 WILL BE SPENT IN ADVERTISING THE MEET AND EXPOSITION

The field is in splendid condition and prominent Aviators who have flown nearly everywhere have praised it for "take off" and "landing."

The buildings are of brick and ideal for an exposition.

OUTLINE OF PROGRAM

THURSDAY—JUNE 21ST

1.00 P. M.—Opening the Exposition.
2.00 P. M.—Dedication of Airport.
PASSENGER FLYING ALL DAY
SPECIAL EVENTS DURING THE
DAY AND EVENING
EXPOSITION OPEN AT NIGHT
AIRPORT LIGHTED

FRIDAY AND SATURDAY JUNE 22nd and 23rd

PASSENGER FLYING,
8.00 to 11.00 A. M.
EXPOSITION OPEN
11.00 A. M. to 10.30 P. M.
EXHIBITION FLYING
11.00 A. M. to 12.00 Noon
2.00 to 4.00 and 8.00 to 9.00 P. M.
SPECIAL EVENTS DURING THE
DAY AND EVENING
AIRPORT LIGHTED

The War, Navy and Commerce Departments of the Federal Government have pledged every possible aid and the fullest co-operation. Each of these departments will send some of its most modern planes piloted by the best flyers in the service.

The U. S. Los Angeles arrives on the Opening Day.

200,000 visitors are expected—Open day and night. 8,000 reserved seats. It will well pay every aircraft manufacturer and dealer to be represented at the Massachusetts Air-Meet and Exposition. Secure orders and your New England Agents at the Exposition.